



# Post-Applied Waterproofing Solutions

**A Comprehensive Portfolio of Products and Accessories  
to Meet a Variety of Application Demands**

# Water under pressure is relentless...

Whenever the water table rises, hydrostatic pressure increases and pushes water against a building's foundation from all directions. When the foundation is concrete, water will find a way in through cracks, voids, crevices and other imperfections, eventually reaching the interior as seepage or dampness. And the only thing standing in the way is the waterproofing system.







# So is Henry waterproofing protection

## **Proven Post-Applied Solutions**

Backed by 50 years of waterproofing expertise, Henry foundation waterproofing systems are designed to withstand hydrostatic pressure. Each system features a membrane of exceptional durability, elasticity through freeze and thaw, and resistance to most naturally occurring and deposited chemicals and soil acidity.

## **Part of a Complete Building Envelope System**

Unlike most waterproofing membranes that are standalone products, Henry waterproofing systems are also a key part of the complete Henry Building Envelope Systems® portfolio which covers structures from foundation to roof. Henry foundation waterproofing systems, including drainage composites, waterstops, and membranes, seamlessly integrate into the Henry Building Envelope Systems portfolio.

**Let Henry help you find the best post-applied  
waterproofing system for your needs.**

# Henry Blueskin® WP200 Self-Adhered System

## Easy to handle. Simple to apply.

The **Blueskin WP200** self-adhered waterproofing membrane provides a high-performance waterproofing barrier for post-applied construction. **Blueskin WP200** fully adheres to the substrate and eliminates water migration between the membrane and the waterproofed surface.

**Blueskin WP200** has excellent elongation properties for waterproofing coverage on a variety of substrates (concrete, masonry and wood) and can resist hydrostatic head pressures up to 231 feet.

## Features and benefits



Easy to install – no special equipment, heat or flame required



No curing time required – membrane can be backfilled immediately



Unique side-lap feature offers superior water-tightness



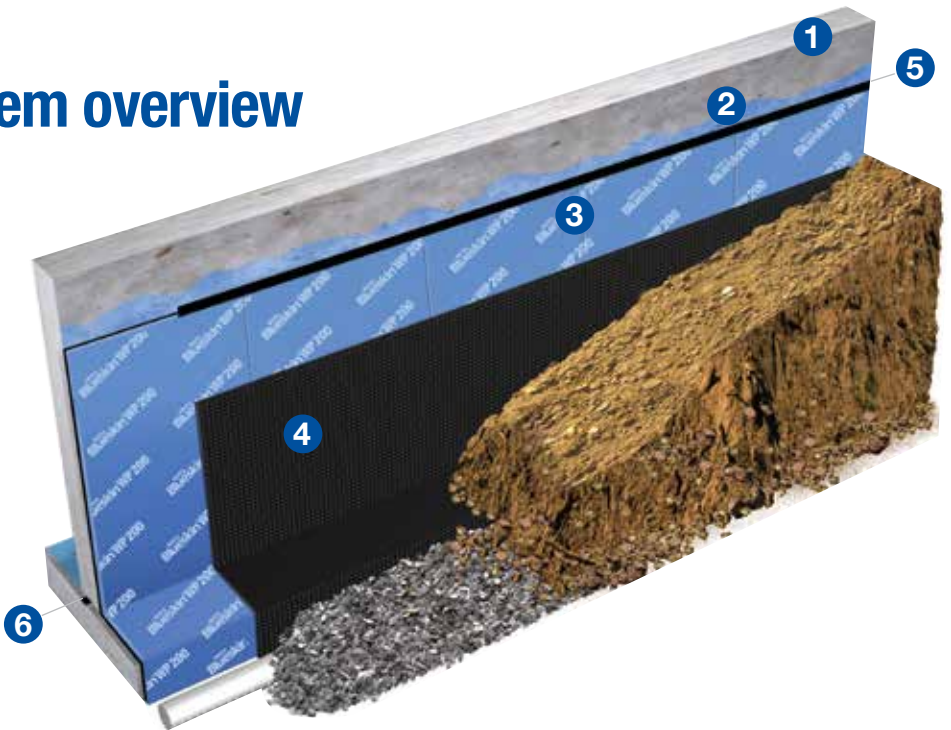
Flexible SBS rubberized asphalt membrane offers excellent cold weather application



No VOC and low odor

## Blueskin WP200 System overview

- 1 Substrate/Concrete
- 2 Aquatac™ Primer or Blueskin LVC Primer
- 3 Blueskin WP200
- 4 Henry Drain Board
- 5 Henry 925 BES Sealant
- 6 MiraSTOP™ BW



# Henry Aqua-Bloc® Cold Fluid-Applied System

## Proven elastomeric performance

The **Aqua-Bloc System** elastomeric membranes are available in three formulations to meet a range of site-specific conditions.

**Aqua-Bloc WB** is a water-based, low-odor and low-VOC emulsified asphalt membrane that is ideal for waterproofing damp or green ICF (Insulated Concrete Forms). **Aqua-Bloc SB** is a solvent-based, single component membrane that is used to repair damaged rubberized membranes. **Aqua-Bloc 2P** is a quick-setting, low-odor and low-VOC emulsified asphalt membrane that performs very well in cold temperatures.

## Features and benefits



Seamless elastomeric membranes retain flexibility over a wide temperature range



Easy to install – no special equipment, heat or flame required



Excellent adhesion to a range of horizontal and vertical surfaces

## Aqua-Bloc System overview

- 1 Substrate/Concrete
- 2 Aqua-Bloc WB, SB or 2P
- 3 Henry Drain Board
- 4 MiraSTOP BW








# Henry CM100 Cold Fluid-Applied System

**Apply it sooner.  
Finish the job faster.**

**Henry CM100** is a cold fluid-applied, single-component, elastomeric waterproofing membrane ideal for a variety of foundation applications. With **Henry CM100**, you no longer have to wait several days for concrete to dry before applying a waterproofing membrane. It cures by reacting with atmospheric and surface moisture to provide a seamless and impervious waterproofing membrane.

## Features and benefits

-  Can be applied to green concrete 24 hours after forms are removed
-  Typical cure time\* is three hours, allowing application of multiple coats in a single day
-  Solvent-free, low odor and non-flammable for safe installation in confined spaces
-  High solids content retains applied thickness with no shrinkage
-  Designed for vertical or horizontal applications, including difficult-to-access areas

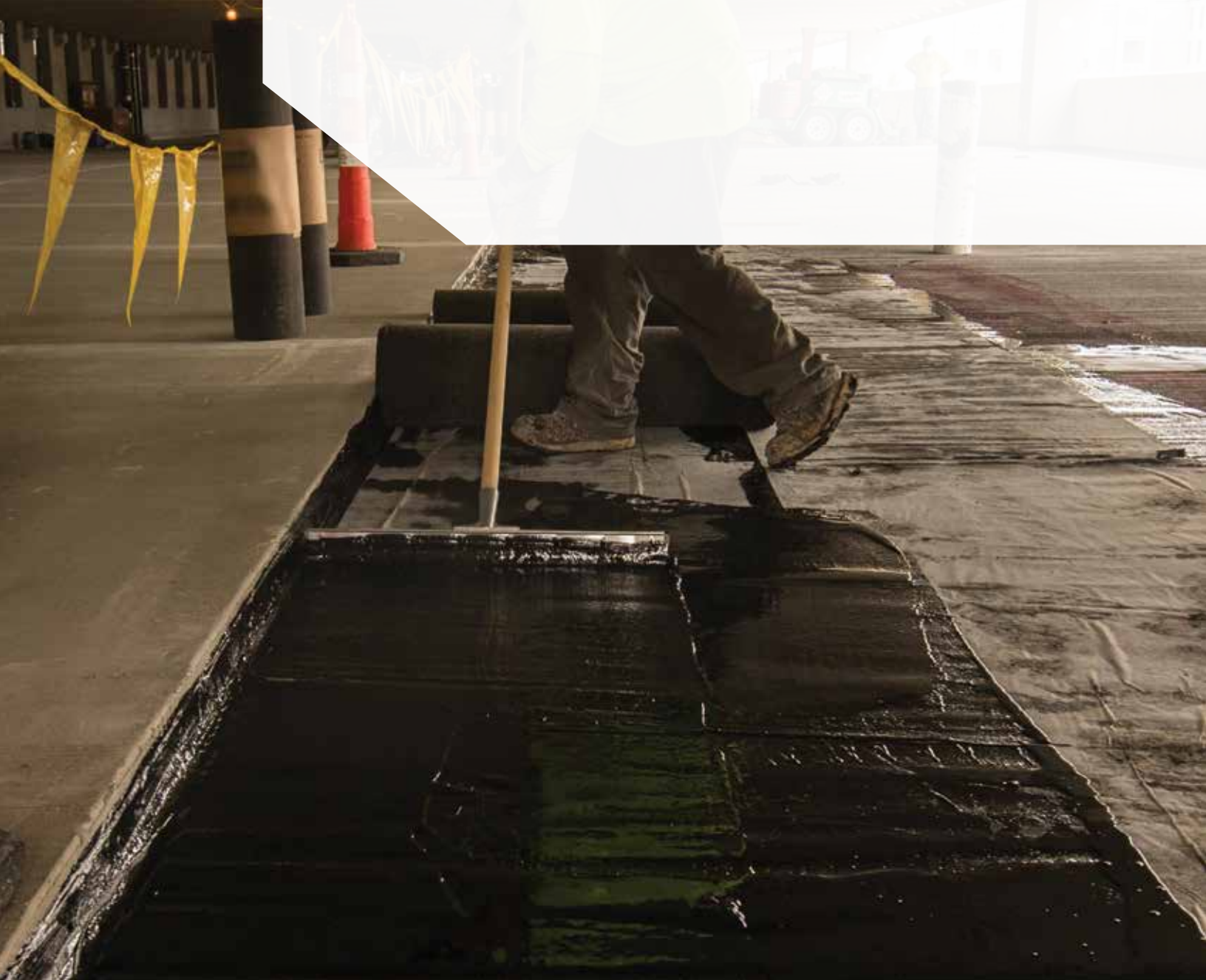
## Henry CM100 System overview

- 1** Concrete
- 2** Henry CM100
- 3** Henry Drain Board
- 4** MiraSTOP BW



\* Subject to weather conditions; see technical data sheet for more details





# Seamless System Integration

From drainage composites and waterstops to membranes, Henry foundation waterproofing systems integrate seamlessly with the Henry Building Envelope Systems portfolio.



# Waterproofing System Accessories

## Waterstops

Henry offers a full line of waterstop products for cold joints, construction joints, penetrations, wet cracks, and water cut-off applications.

### **MiraSTOP BW**

A bentonite waterstop that swells when in contact with water.

### **MiraSTOP NBW**

A non-bentonite waterstop that swells when in contact with water.

### **MiraSTOP SS**

A sealant that swells when in contact with water.

### **MiraSTOP IW**

A conduit for MiraSTOP chemical grouts to seal cold joints, construction joints, and penetrations.

### **MiraSTOP CG-F**

A flexible chemical grout when combined with MiraSTOP CG-F CAT and water.

### **MiraSTOP CG-HS**

A high-strength chemical grout when combined with MiraSTOP CG-HS CAT and water.

### **MiraSTOP PF**

A high-performing pump flush used to flush, clean, and prime polyurethane injection pumps.

### **Synko-Flex®**

A self-sealing, non-swelling preformed joint sealant that provides a lasting, watertight bond on both fresh and cured concrete surfaces.

## Accessories

Henry® offers above-grade waterproofing systems designed to protect projects from water intrusion.

### **Henry Pumadeq Flex 31MV**

A 100% solids, two-part, rapid-curing, liquid-applied membrane.

### **Neoflash**

Uncured neoprene flashing sheet is designed for use with expansion joints and exposed flashing details.

### **Henry 910-01 Penetrating Asphalt Primer**

Penetrating asphalt primer suitable for use with hot or cold applied asphalt coatings, roof cements, mastics and adhesives.

### **Henry Drain Board**

A cost-effective drainage composite that helps improve the flow of water away from the building structure.

### **Aquatac™ Primer**

A primer that provides a high level of tack on vertical surfaces.

### **Blueskin® Adhesive**

A high-strength chemical grout when combined with MiraSTOP CG-HS CAT and water.

### **Blueskin LVC Adhesive**

Low VOC formula that enhances adhesion of self-adhered Blueskin membranes.



# Henry 790-11 Hot Rubberized Asphalt

## The industry standard for over 50 years

Since 1967, **Henry 790-11 Hot Rubberized Asphalt** has been maintaining its integrity across millions of square feet of high-traffic applications, including tunnels, parking garages, fountains, plazas and decking.

**Henry 790-11** can bridge non-working cracks up to 1/16" wide creating a virtually seamless and flexible waterproofing membrane.

This high-performance formulation is composed of a specially selected blend of refined asphalts, synthetic rubber and mineral stabilizers modified to promote unsurpassed adhesion. This hot rubberized asphalt solution is also available in an environmentally friendly formulation – **Henry 790-11EV**.

A specially selected blend of refined asphalts, synthetic rubber and mineral stabilizers modified to promote unsurpassed adhesion.

## Features and benefits



Seamless application provides monolithic (joint-free) waterproofing



Suitable for installation onto non-sloped horizontal substrates



Can be applied at below-freezing temperatures



100% solids provides immediate cure on cooling



Fully adhered (no lateral water migration)



Remains fully elastomeric through hot and cold cycles



# Total protection is our mission

## Henry Building Envelope Systems

For over 80 years, Henry products and systems have helped manage the flow of water, air, vapor, and energy through the building envelope. From foundation to roof, our solutions improve the energy efficiency, livability and sustainability of commercial and residential structures, for the benefit of the owner, occupant and the environment.

Most importantly, our experience has confirmed that the building envelope needs to be viewed as a holistic system – from roof to wall to foundation – offering a solid line of defense from the elements. Today, our Building Envelope Systems include an entire portfolio of interrelated solutions to help you meet the challenges you face.

When it comes to making sure you get the **waterproofing systems** and **Building Envelope Systems** solutions and expertise you need, turn to a partner you can trust – **turn to Henry.**





## Waterproofing Systems

Designing a durable waterproofing system starts with the foundation and extends to critical transition areas such as plaza decks. Once the building is complete, the opportunity to integrate an optimized waterproofing system into the building envelope is lost. Henry provides proven, comprehensive waterproofing solutions that keep the structure dry and protect it from damage due to water infiltration.

## Air Barrier Systems

Designing air barrier systems for today's structures has never been more challenging. A designer has to balance air leakage, water resistance, vapor management, thermal controls and fire resistance, all while keeping an eye on the budget. Henry Building Envelope Systems include an entire portfolio of air barrier solutions to help you meet your goals.

## Roofing Systems

From providing durable, watertight performance, to managing storm water run-off and offering outdoor green spaces, Henry roofing systems are designed to meet the challenges of these evolving trends. Inverted roof membrane assemblies, including vegetative roof assemblies and solutions for plaza decks, along with conventional roofing solutions for low-slope and flat roof applications help provide years of reliable service to building owners and occupants.

**All Henry Building Envelope Systems are backed by comprehensive warranties.**



**Henry**<sup>®</sup>

**Building Envelope Systems**<sup>®</sup>  
Roofing | Air Barrier | Waterproofing

Ask us today about other Henry<sup>®</sup> solutions that help manage the flow of water, air, vapor and energy.

Henry, Aqua-Bloc, Blueskin, Blueskin PreSeal are registered trademarks of Henry Company. Carlisle is a registered trademark of Carlisle. Max Frank is a registered trademark of Max Frank GmbH & Co.